

Arreton Parish Council Newsletter

Autumn Edition - Sept 2025

Community Speedwatch

A BIG THANK YOU to the dedicated volunteers from the Speedwatch Groups in Arreton and Merstone who have given much time and energy to these projects to help make our communities safer for those who live here and those passing through.

Unfortunately, the Arreton group has now ceased to operate mainly due to the lack of new volunteers coming forward. The equipment has been returned to the Parish Council for safe keeping.

In July the Merstone Group also advised the Parish Council that they have ceased running sessions. Since they started in November 2023 they have submitted 54 hours of data to the authorities. The data shows an average of 20 speeders per hour with 25% travelling at 40mph or more.

IWC Central Rural Ward Councillor Caroline Gladwin has also recently added her voice to the campaign.

The response from IWC, Island Roads and the Hampshire and IW Constabulary is that the information available does not justify spending a significant amount of money on a traffic calming scheme in Merstone.

PARISH COUNCIL UPDATE

Hope everyone had a good summer, enjoyed the sunshine and found somewhere to keep cool too. It really feels as if autumn has arrived now!

Since the last newsletter in early June the Parish Council has met three times – June, July and September. The June meeting saw the co-option of our new councillor to the vacancy that existed following the election in May. We welcomed back Mary Filer who is a long-standing resident who will be known to many of you and look forward to working with her over the next few years.

Over the summer Councillors have been at Parish events – namely The Big Tea at the Community Hall, Arreton Primary School Summer Fayre, Arreton Open Gardens and the VJ Commemoration Service at St George's Church.

A donation of £100 has been made towards Arreton Cricket Club's End of Summer Event – please support this if you can on 13th September (see poster for details).



St Georges Church, Arreton

Dates for your Diary

Saturday 13th September 11am-3pm – Arreton Cricket Club End of Summer Fair at Goddards Brewery, Arreton

October 7th 3 pm A concert of light classical music at Haseley Manor on - piano, flute, harp and recorder, tea in the interval - to raise money for the Seaview Sailing Trust. Email Vivian Roberts roberts.haseley@gmail.com for more information as soon as possible as seats are limited. Tickets costing £25 must be bought in advance

The Big Tea at Arreton Community Hall on Sunday 8th June was attended by 30 people who enjoyed good company and lots of teas and cake!
Arreton Open Gardens 2025 was very successful and raised £1200 with the proceeds split between Scouts on the island and the Home Start Charity.
The Cream Tea for Cancer Research sponsored by the Merstone based Island Jam Company, Calbourne Classics and Briddlesford Farm Dairy held at "Venners" this summer was open to all and raised £600.



Community Hall Improvements



New front doors have been at the Community Hall. Thank you to Wight Aid for their help and support.

 www.facebook.com/accsommerfair

ARRETON CRICKET CLUB

END OF SUMMER FAIR

FREE ENTRY

HOSTED AT GODDARDS BREWERY

Saturday 13th September 2025
11am-3pm

JOIN US FOR LOTS OF FUN!

- Fun Dog Show •
- Stalls •
- BBQ •
- Entertainment •
- Bouncy Castle •
- Games •
- And more •





RAJ'S PREMIER APSE HEATH



THANK YOU

lesliesmotors

MORGANS CATERING

Arreton Parish





ARRETON CRICKET CLUB

ARRETON CC Dog Show

Saturday 13th September 2025
@ Goddards Brewery, Arreton

Register from 11am - 12pm
Part 1 : 12 - 1pm
Part 2 : 1.30 - 2.30pm

Fun show All welcome

£2 per entry

- Best Handler
- Waggiest Tail
- Best Male
- Best Bitch
- Best Pedigree
- Best Rescue

Show off your pooches

Sponsored by Sandown Pet Store

 Pawsitive Animal Care Ltd
Positivity, Kindness and Respect





GREENING
25 September @ 18:30
Rookley Village Hall

Our community decides

CENTRAL RURAL

Space for Nature

Food security

Health

Energy use

Volunteering with purpose

Waste Prevention

Come and hear our plans & add your ideas all with expert support funded by the National Lottery

Contact Greening Central Rural
chairman@arreton-pc.gov.uk

Sustainability event
...meet the funders

Wednesday 8 October
Riverside Centre, 9.30am to 4.30pm

Attention Isle of Wight organisations!
Whether you are a small grassroots group or a larger charity, this event is packed with practical support:

- Presentations from local and national funders.
- One-to-one appointments with funding providers.
- Workshops on funding strategies, bid writing and project governance.

This is an opportunity you won't want to miss!
Space is limited and lunch can be provided at a cost of £5 per person bookable in advance.

To secure your spot, please scan the QR code by Wednesday 1 October.

<https://forms.office.com/pages/responsepage.aspx?id=8831X1ZEGjlyRMy5ghe5APmb547279v5SmjANNwRUMz5s3TUWFmMUKQNBKTEKMKYU1STH4u8e9m-QRCodeRoute-shorturl>

Community Action Isle of Wight
Isle of Wight Council

FREE ENTRY

The Footprint Trust

Riverside Centre, Newport
10am - 1pm

16th October 2025

WINTER IS COMING

Free Help Event

ENERGY HOUSING EMPLOYMENT
FOOD BENEFITS HEALTH FAMILIES

ISORROPIA STOREROOM LIVING WELL
EMBRACING AGE SOUTHERN WATER COST OF LIVING
HEALTHWATCH SOUTHERN WATER FOOTPRINT TRUST PAN TOGETHER
SOUTHERN HOUSING PARAGÓN
VETERANS OUTREACH SUPPORT PYLE STREET PANTRY

FREE

**CONTACT THE FOOTPRINT TRUST FOR MORE INFORMATION:
01983 82 22 82 OR INFO@FOOTPRINT-TRUST.CO.UK**

I.O.W Friendship Group

For people living with dementia

Our friendship group is for people living with dementia or awaiting a diagnosis of dementia and their family, friends or carers. We provide a number of activities for you to take part in or if you'd prefer, just come along for a chat. This is a friendly and welcoming group who also like to go out and about throughout the year

**Third Wednesday of the month,
10.30am – 12.30pm**

Downside Community Centre, Furlongs, Newport,
PO30 2AX.

Call Caroline on 07483 137538 or email
HIP@alzheimers.org.uk if you are interested in attending the group.

Alzheimer's Society
Together we are help & hope
for everyone living with dementia

Registered charity no. 296645. Alzheimer's Society operates in England, Wales and Northern Ireland.

Free open days at Newport museums



**NEWPORT
ROMAN
VILLA**



**MUSEUM
of ISLAND
HISTORY**

Wednesday 17 September

10.30am to 2.30pm

- Free guided tours: 11am, 12pm, 1pm
- Explore one of the best-preserved Roman bath suites in Southern Britain

**Cypress Road,
Newport, PO30 1HA**

Thursday 18 September

10am to 2pm

- Discover Island history
- New Vectis Searchers metal detecting display
- Join the free immersive 'Mew in Newport' walk*

**Guildhall, High Street,
Newport, PO30 1TY**

*Walk led by StoneCrabs Theatre. For info and to book: mewinnewport.eventbrite.co.uk

01983 823433

iow.gov.uk/museums
museums@iow.gov.uk



Events organised
by Isle of Wight
Heritage Service



Hampshire and Isle of Wight

Accessing

NHS dentists

If you urgently need to see an NHS dentist, call 111 - you may be referred to a local dentist for an urgent appointment, even if you are not known to them.

If you are finding it difficult to access an NHS Dentist and you need additional care after receiving urgent treatment, or a routine check-up for certain patient groups, you may be eligible for our Flexible Commissioning Scheme.

Who is the Flexible Commissioning Scheme for?

You may be eligible to access an NHS dentist through the scheme if you:

- Haven't seen a dentist in 2+ years
- Are a looked after child
- Are pregnant or breastfeeding
- Are part of an armed forces family
- Live in a care home and are able to travel for treatment
- Are an asylum seeker or refugee
- Are in need of a dental check-up to support hospital attendance
- Were recently seen under an Urgent Access Appointment Scheme



Find out more at:

hantsiow.icb.nhs.uk/dentistry



Community Resilience by Cllr Kathryn Taylor

Town and Parish Councils are starting to play a role in community emergency plans, especially in times of incidents such as severe adverse weather, wildfires, loss of water or power etc.

As the Parish Council commence developing our local plan we are starting to seek some support from our community. **The first ask is that you talk to neighbours and friends in the parish and encourage them to sign up for this Parish Newsletter and share their e-mail with the clerk.** This will be kept confidential, but it means if we are asked to share emergency information with the community we have a data base of people who are easier to contact.

Also, please think about your neighbours, are they isolated or perhaps housebound and would they need some support in the case of an incident that affects our community, would you know if they would need assistance? We will be looking at how the Parish Council can assist in these situations.

We will also be developing a data base of willing 4x4 and tractor owners who could help in getting to residents in adverse weather or perhaps getting food or medicines or even the community nurses to the resident, please keep an eye on upcoming newsletters for more on this.

FREE Community First Aid Sessions

with Glen Abbot from St Johns Ambulance are in the process of being organised, more info will be circulated as soon as the dates are confirmed



TREES



Does anyone know of an area of land in the Parish that could benefit from the Woodland Trust Tree Planting programme? If so, please contact the Clerk with information.



Arreton Community Hall



Arreton Community Hall Social Club Licensed Bar – serving alcoholic and soft drinks, tea and coffee. Social seating area, two snooker tables, bar billiards, dart board and playing cards. Free Wifi in the building. Bar open currently every **Tuesday, Wednesday and Friday from 7:30pm to 11:00pm.**

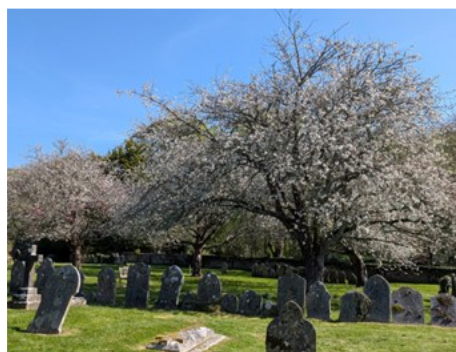
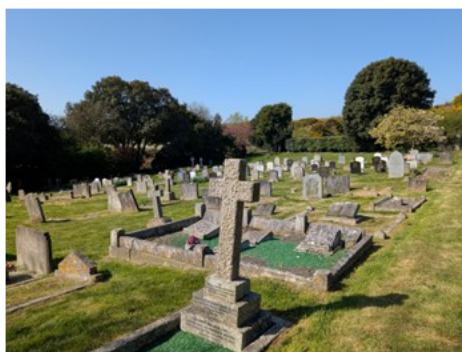
The Community Hall provides a great venue for groups, celebrations and family gatherings – just £11 per hour to hire. Contact Simon Dodson on 07973 323560 or go to the Arreton Parish Council website for more information



For details of What's On from the monthly Community Lunch to all manner of dance classes and clubs please follow this link to the Community Hall Diary:

<https://www.brownbearsw.com/cal/arreton>

Churchyard and Cemetery



The annual inspection of the 2 burial grounds was carried out before the July meeting. As well as regular maintenance it is hoped that in partnership with our neighbours and island organisations some of the ivy and other overgrown vegetation can be cleared from the churchyard tombs, headstones and boundaries.

The Clerk has begun entry of the burial records on Scribe Cemetery software. Due to the vast amount of information this is ongoing but we will keep you posted!

TRANSPORT AND ROADS INFORMATION



Road improvement schemes set to begin



Island Roads is set to carry out two major road improvement projects this month. The first scheme will begin on 8 September and will involve a two-week upgrade of sections of Ventnor Road in Apse Heath. Once that work is complete, a second project will begin on **Arreton Road, Arreton**, with improvements scheduled to take three days. Arreton Road will be closed between Downend Road and Wight Farm Energy.

Due to the need for deeper-than-usual excavations to rebuild the road foundations, both roads will be fully closed to through traffic for the duration of the schemes. The work programme is subject to change due to factors such as the weather or unexpected ground conditions being encountered on site. The Arreton work will not begin until the Apse Heath work is completed.

Island Roads invites residents to have their say in annual customer survey

Island Roads is calling on residents to share their views on the highway services it delivers as it launches its annual customer survey. The survey asks residents to rate a wide range of Island Roads' services; including road and footway resurfacing, winter maintenance, street cleansing, verge and grass cutting and customer services, which help maintain and improve the Island's highway network. The survey also invites feedback on reporting tools, such as Fix my Street and on Island Roads' wider contribution to the community including grants provided by the Isle of Wight Foundation - the company's separately funded charitable foundation.

The survey will run from **Monday 1 September to midnight on Tuesday 30 September 2025** and can be completed online via [Island Roads | Customer Survey 2025](#).

Paper copies, including large print versions, are available on request by emailing info@islandroads.com



Island residents, businesses and visitors are being asked to share their views on the draft plan which sets out our vision and priorities for our transport and travel network and how Island residents, business and visitors can enjoy sustainable, affordable, accessible and safe travel for the next 15 years.

The consultation takes place over a 12-week period between 1 September and midnight on 24 November 2025 and you can get involved online, in person at drop in events (Newport, Cowes, East Cowes, Freshwater, Ryde, Ventnor and Sandown) or in writing. If you would prefer to complete a paper copy of the survey, you can request one by emailing islandtransportplan@iow.gov.uk or calling 01983 821000 and speaking to our reception team. You can also write to us with your views on the plan to: Island Transport Plan 4 Consultation, Isle of Wight Council, St. Christopher House, 42 Daish Way, Newport, Isle of Wight. PO30 5XJ

You can also join an online meeting to find out more.

There will be a presentation at the start of the meeting followed by a Q&A session with those on the call.

Wednesday 8 October, 10:00-11:30 Online meeting (Teams) <https://bit.ly/4mr7E4o>

Monday 3 November, 17:00-18:30 Online meeting (Teams) <https://bit.ly/41JeXfy>

Information about the consultation can be found on the council's website www.iow.gov.uk/LTP4

Suicide First Aid

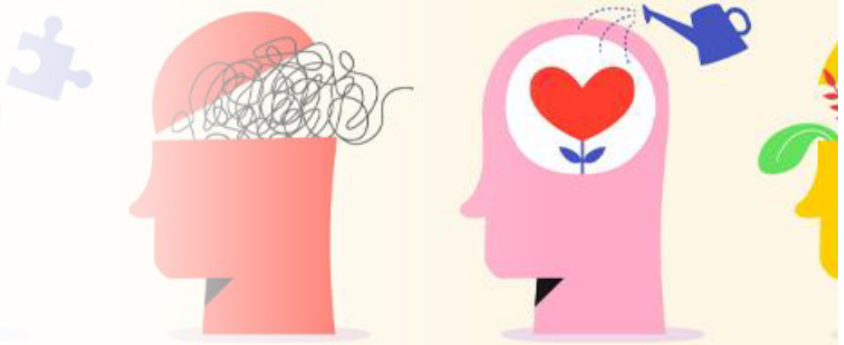
This FREE full day course provides learners with the foundational knowledge and practical skills needed to effectively intervene in situations where someone may be contemplating suicide.

Designed for individuals across various professions and community roles, this programme equips learners with the tools to recognise the signs of suicide, initiate life-saving conversations, and connect at-risk individuals with appropriate resources.

Whether you're a healthcare professional, educator, HR personnel, or concerned community member, this programme empowers you to make a real difference

30th September 2025 09:30am–4.30pm at The Learning Centre, Westridge, Brading Road, Ryde, Isle of Wight, PO33 1QS

Isle of Wight Council employees should book via the [course page](#) on the Learning Hub. External delegates can see more information [here](#) and book by completing the [online application form](#)



Your Designated Neighbourhood Policing Team

PC Liz Clapp
Work Mobile: 07974049899
Email: liz.clapp@hampshire.police.uk

PCSO Justin Keefe
Work Mobile: 07901102302
Email: justin.keefe@hampshire.police.uk

We are happy to chat to you about any concerns.

However please report all incidents via 999 in an emergency, otherwise use 101 or online for non-emergency.



Parish Council Meeting Dates

Arreton Community Hall
Second Monday at 7pm

13th October
10th November
8th December

Members of the public are welcome to attend. The agenda is published on the website, parish noticeboards and emailed to residents who have requested receipt of regular information.

Contact Us

Arreton Parish Council

Clerk and Burial Registrar: Claire Gale
Email: clerk@arreton-pc.gov.uk
Phone: 07587 008183

Chairman: Cllr Nicholas Gurney-Champion
Email: chairman@arreton-pc.gov.uk

Website: www.arreton-pc.gov.uk